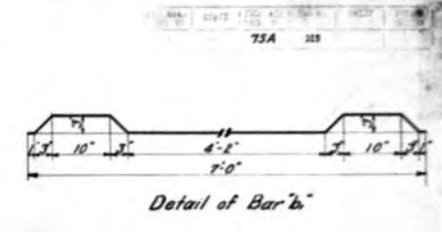
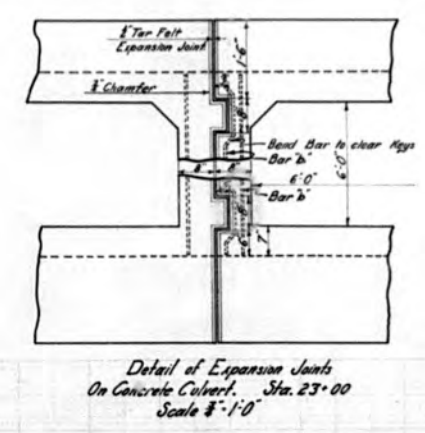
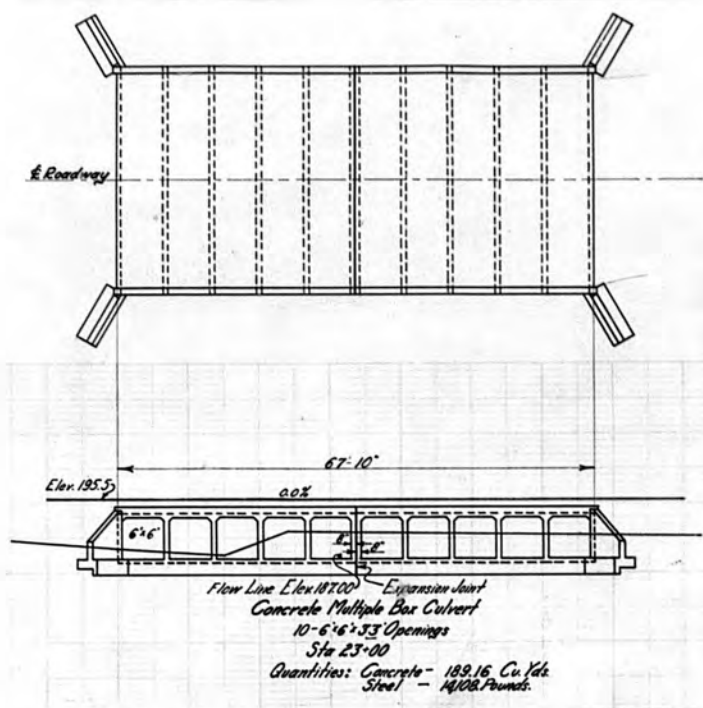


25

200  
190  
180  
170

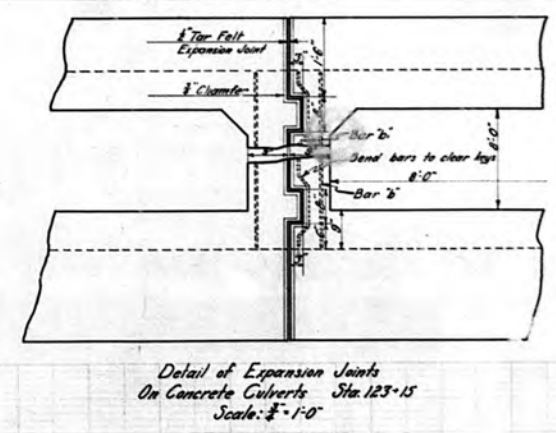
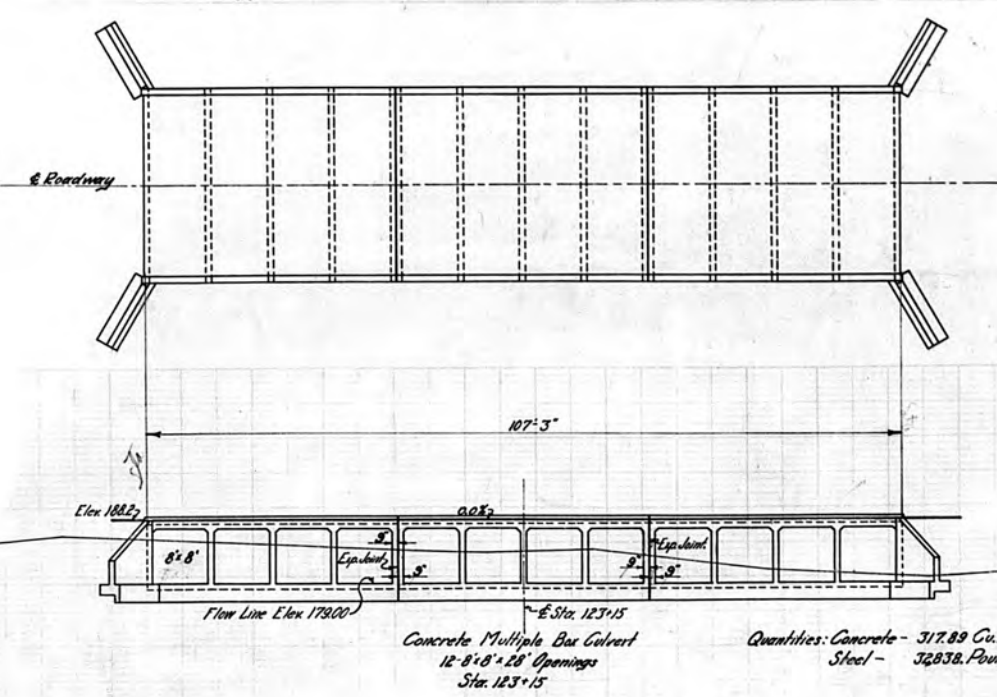


DESIGNED	DATE
CHECKED	DATE
APPROVED	DATE

23

24

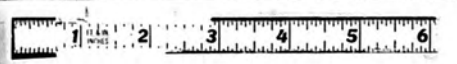
190  
180  
170

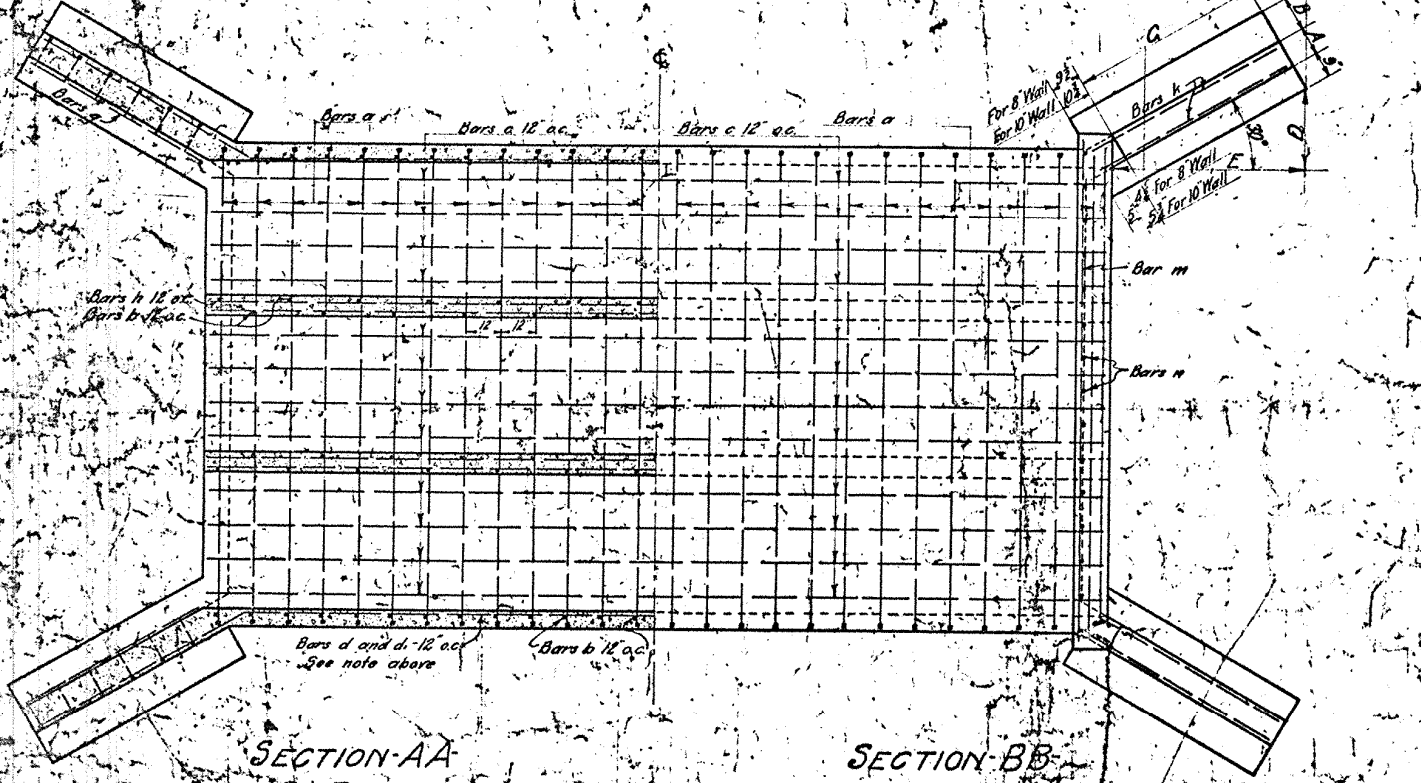
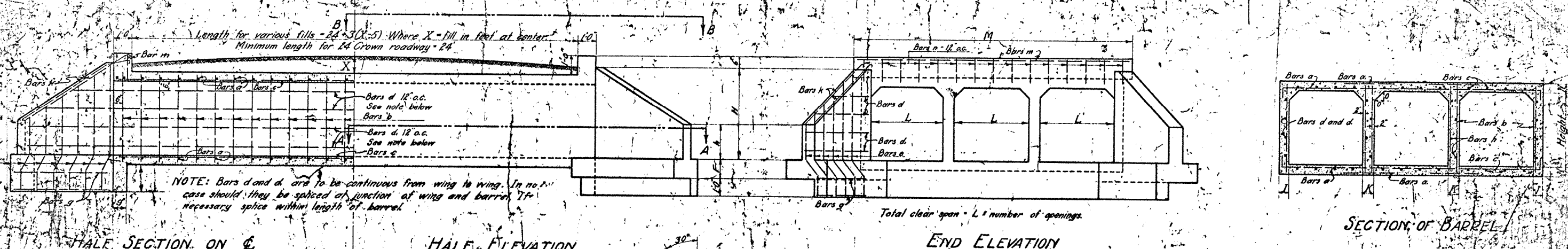


GENERAL PLAN FOR CULVERTS  
AT  
Sta. 23+00 and Sta. 123+15  
PROJECT 75A  
LOUISIANA HIGHWAY COMMISSION  
BATON ROUGE, LA.  
Scale: 1" = 10'-0" except as noted. Nov. 25, 1925

B-10-26

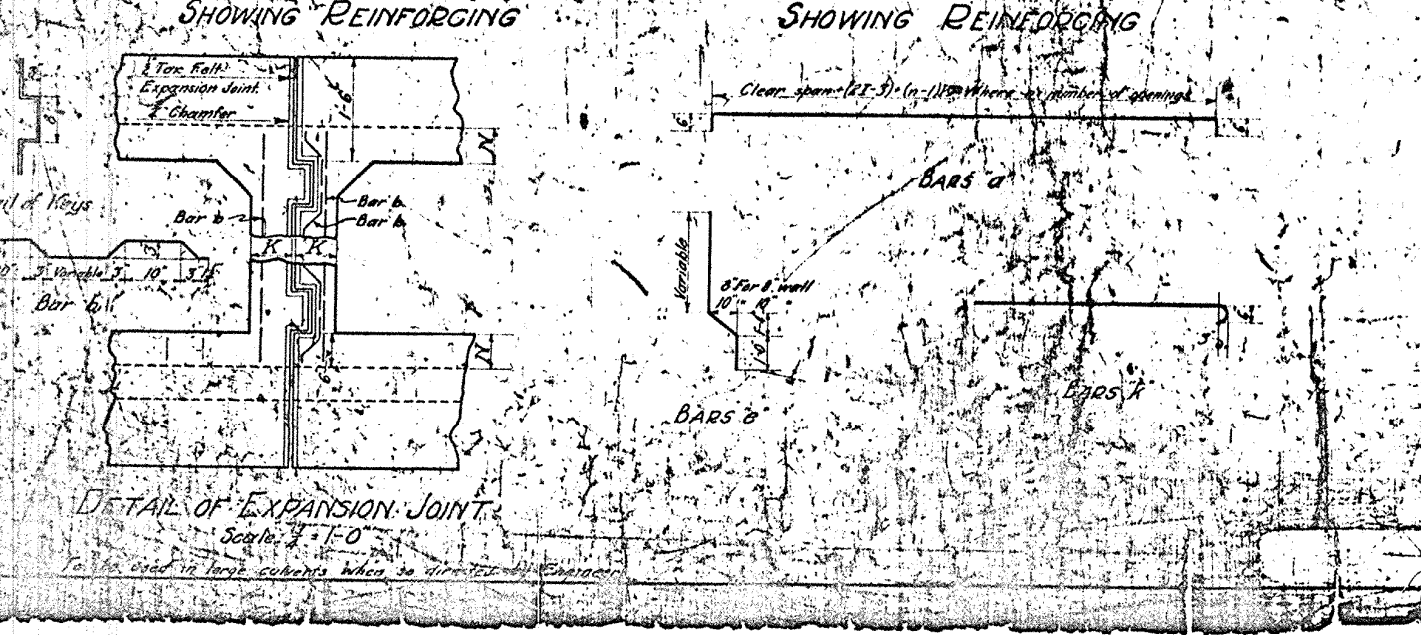
FINAL TRACINGS





**REINFORCEMENT FOR 24' CULVERT**

OPENING	Clear Height	Total Clear Span	BARREL REINFORCEMENT ALL #3 BARS										WING AND CURB REINFORCEMENT ALL #3 BARS															
			Bars a		Bars a'		Bars b		Bars c		Bars d		Bars d'		Bars h		Bars m		Bars n		Bars s							
			No.	Length	No.	Length	No.	Length	No.	Length	No.	Length	No.	Length	No.	Length	No.	Length	No.	Length	No.	Length	No.	Length				
3	6	70	8-3	9	70	2-0	78	3-9	12	25-9	31-3	3-6	34-9	2	2	34-10	25	25-9	2	7-3	16	1-3	3-8	1-6	4	4-9	8	6-0
	9	70	11-9	9	140	2-0	104	3-9	18	25-9	31-3	3-6	34-9	2	2	34-10	6	25-9	2	11-3	24	1-3	5-8	7-6	4	4-9	8	6-0
	12	70	15-3	9	210	2-0	150	3-9	24	25-9	31-3	3-6	34-9	2	2	34-10	9	25-9	2	14-9	30	1-3	5-8	7-6	4	4-9	8	6-0
	15	70	18-9	9	280	2-0	198	3-9	30	25-9	31-3	3-6	34-9	2	2	34-10	12	25-9	2	18-3	36	1-3	5-8	7-6	4	4-9	8	6-0
	18	70	22-3	9	350	2-0	264	3-9	36	25-9	31-3	3-6	34-9	2	2	34-10	15	25-9	2	21-9	44	1-3	5-8	7-6	4	4-9	8	6-0
	21	70	25-9	9	420	2-0	336	3-9	42	25-9	31-3	3-6	34-9	2	2	34-10	18	25-9	2	24-9	52	1-3	5-8	7-6	4	4-9	8	6-0
4	8	70	10-4	9	70	2-9	78	4-9	16	25-9	31-3	3-6	34-9	2	2	37-0	4	25-9	2	10-3	22	1-3	4-3	7-7	4	4-9	8	6-0
	12	70	14-11	9	140	2-9	104	4-9	24	25-9	31-3	3-6	34-9	2	2	37-0	4	25-9	2	14-0	30	1-3	4-3	7-7	4	4-9	8	6-0
	16	70	18-6	9	210	2-9	150	4-9	32	25-9	31-3	3-6	34-9	2	2	37-0	12	25-9	2	19-5	40	1-3	4-3	7-7	4	4-9	8	6-0
	20	70	22-3	9	280	2-9	198	4-9	40	25-9	31-3	3-6	34-9	2	2	37-0	16	25-9	2	24-0	50	1-3	4-3	7-7	4	4-9	8	6-0
	24	70	25-9	9	350	2-9	264	4-9	48	25-9	31-3	3-6	34-9	2	2	37-0	20	25-9	2	28-7	58	1-3	4-3	7-7	4	4-9	8	6-0
	28	70	29-6	9	420	2-9	336	4-9	56	25-9	31-3	3-6	34-9	2	2	37-0	24	25-9	2	32-4	66	1-3	4-3	7-7	4	4-9	8	6-0
5	10	78	12-7	8	76	3-3	82	5-9	20	25-9	31-3	3-6	34-3	2	2	39-8	5	25-9	2	12-4	25	1-3	4-9	7-8	4	4-9	8	6-0
	15	78	18-3	8	152	3-3	104	5-9	30	25-9	31-3	3-6	34-3	2	2	39-8	10	25-9	2	18-0	38	1-3	4-9	7-8	4	4-9	8	6-0
	20	78	23-11	8	228	3-3	150	5-9	40	25-9	31-3	3-6	34-3	2	2	39-8	15	25-9	2	23-8	48	1-3	4-9	7-8	4	4-9	8	6-0
	25	78	28-7	8	304	3-3	198	5-9	50	25-9	31-3	3-6	34-3	2	2	39-8	20	25-9	2	29-4	60	1-3	4-9	7-8	4	4-9	8	6-0
	30	78	33-3	8	380	3-3	274	5-9	60	25-9	31-3	3-6	34-3	2	2	39-8	25	25-9	2	35-0	70	1-3	4-9	7-8	4	4-9	8	6-0
	35	78	37-9	8	456	3-3	354	5-9	70	25-9	31-3	3-6	34-3	2	2	39-8	30	25-9	2	40-6	80	1-3	4-9	7-8	4	4-9	8	6-0
6	12	88	14-7	7	86	3-9	92	6-11	24	25-9	31-6	3-6	38-6	2	2	41-6	6	25-9	2	14-4	30	1-4	5-3	7-9	4	4-9	8	6-0
	18	88	21-3	7	172	3-9	104	6-11	36	25-9	31-6	3-6	38-6	2	2	41-6	12	25-9	2	21-0	44	1-4	5-3	7-9	4	4-9	8	6-0
	24	88	27-11	7	258	3-9	150	6-11	48	25-9	31-6	3-6	38-6	2	2	41-6	18	25-9	2	27-8	56	1-4	5-3	7-9	4	4-9	8	6-0
	30	88	34-7	7	344	3-9	196	6-11	60	25-9	31-6	3-6	38-6	2	2	41-6	24	25-9	2	34-4	70	1-4	5-3	7-9	4	4-9	8	6-0
	36	88	41-3	7	430	3-9	242	6-11	72	25-9	31-6	3-6	38-6	2	2	41-6	30	25-9	2	41-0	84	1-4	5-3	7-9	4	4-9	8	6-0
	42	88	47-9	7	516	3-9	288	6-11	84	25-9	31-6	3-6	38-6	2	2	41-6	36	25-9	2	47-6	98	1-4	5-3	7-9	4	4-9	8	6-0
8	16	122	18-0	5	120	5-0	78	9-3	32	25-9	32-0	3-6	46-0	2	6	46-8	8	25-9	2	18-5	38	1-6	6-3	7-11	4	4-9	8	6-0
	24	122	27-9	5	240	5-0	104	9-3	48	25-9	32-0	3-6	46-0	2	6	46-8	16	25-9	2	27-2	56	1-6	6-3	7-11	4	4-9	8	6-0
	32	122	36-8	5	360	5-0	130	9-3	64	25-9	32-0	3-6	46-0	2	6	46-8	24	25-9	2	35-1	74	1-6	6-3	7-11	4	4-9	8	6-0
	40	122	45-7	5	480	5-0	156	9-3	80	25-9	32-0	3-6	46-0	2	6	46-8	32	25-9	2	42-8	90	1-6	6-3	7-11	4	4-9	8	6-0
	48	122	54-6	5	600	5-0	182	9-3	96	25-9	32-0	3-6	46-0	2	6	46-8	40	25-9	2	50-5	108	1-6	6-3	7-11	4	4-9	8	6-0



**DIMENSIONS AND QUANTITIES FOR 24' CULVERT**

Dimensions of single Opening	Number of Openings	TOTAL CLEAR SPAN		X	BARREL												WINGS AND CURB												Per Lin. Ft. Bar. Steel Concr.	TOTAL QUANTITIES	
		FL.	SA. FL.		FL.	IN	KN	OM	A	B	C	D	F	E	H	h.	FL.	CON.	FL.	CON.	Lbs.	C.Y.	Lbs.	C.Y.							
3x3	2	6	18	3	6	6	6	6	6	8	8	9	4.5	1-9	1-0	4-7	4-0	1-6	306	4.83	1528	16.28									
3	9	27	3	6	6	6	6	6	8	8	9	4.5	1-9	1-0	4-7	3-0	1-6	738	4.82	2167	21.78										
4	12	36	3	6	6	6	6	6	8	8	9	4.5	1-9	1-0	4-7	2-0	1-6	972	4.81	2808	27.22										
5	15	45	3	6	6	6	6	6	8	8	9	4.5	1-9	1-0	4-7	1-0	1-6	1206	4.80	3448	32.69										
6	18	54	3	6	6	6	6	6	8	8	9	4.5	1-9	1-0	4-7	0-0	1-6	1438	4.80	4088	38.16										
4x4	2	8	32	3	6	6	6	6	7	6	10	1-0	5-6	4-4	1-0	5-6	3-0	1-10	455	4.87	1997	22.97									
	3	12	48	3	6	6	6	6	7	6	10	1-0	5-6	4-4	1-0	5-6	3-0	1-10	644	4.82	2817	30.52									
	4	16	64	3	6	6	6	6	7	6	10	1-0	5-6	4-4	1-0	5-6	3-0	1-10	833	4.77	3637	38.13									
	5	20	80	3	6	6	6	6	7	6	10	1-0	5-6	4-4	1-0	5-6	3-0	1-10	1022	4.72	4457	45.74									
	6	24	96	3	6	6	6	6	7	6	10	1-0	5-6	4-4	1-0	5-6	3-0	1-10	1211	4.67	5277	53.35									
	7	28	112	3	6	6	6	6	7	6	10	1-0	5-6	4-4	1-0	5-6	3-0	1-10	1400	4.62	6097	60.95									
5x5	2	10	50	3	6	6	6	6	7	6	12	1-3	6-6	5-4	1-3	6-7	4-0	2-3	644	4.96	2577	31.00									
	3	15	75	3	6	6	6	6	7	6	12	1-3	6-6	5-4	1-3	6-7	4-0	2-3	933	4.89	3706	40.80									
	4	20	100	3	6	6	6	6	7	6	12	1-3	6-6	5-4	1-3	6-7	4-0	2-3	1222	4.82	4835	50.60									
	5	25	125	3	6	6	6	6	7	6	12	1-3	6-6	5-4	1-3	6-7	4-0	2-3	1511	4.75	5964	62.40									
	6	30	150	3	6	6	6	6	7	6	12	1-3	6-6	5-4	1-3	6-7	4-0	2-3	1800	4.68	7093	72.20									
	7	35	175	3	6	6	6	6	7	6	12	1-3	6-6	5-4	1-3	6-7	4-0	2-3	2089	4.61	8222	84.00									
6x6	2	12	72	3	7	7	7	7	8	6	14	1-6	7-9	5-3	1-3	7-6	4-7	2-7	1063	4.94	3198	39.57									
	3	18	108	3	7	7	7	7	8	6	14	1-6	7-9	5-3	1-3	7-6	4-7	2-7	1552	4.87	4327	51.36									
	4	24	144	3	7	7	7	7	8	6																					